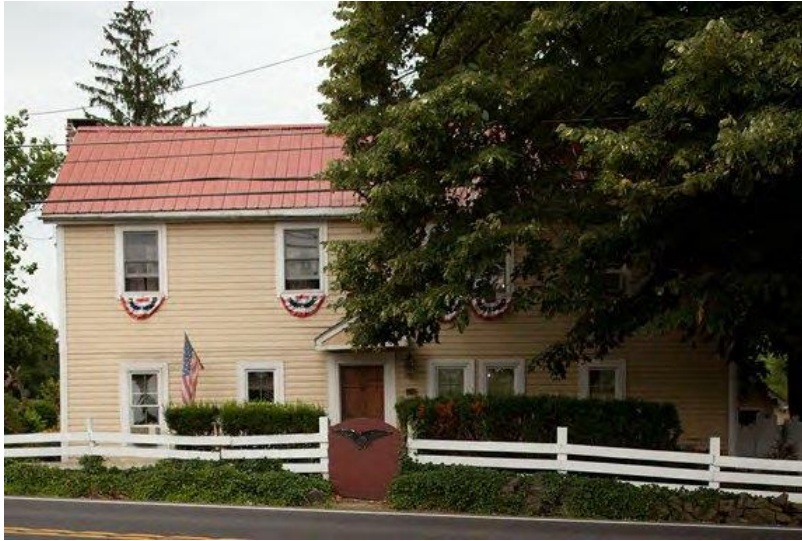


Gettysburg Battlefield Home for Sale



\$409,000

Situated on 10.28 acres, with a registered land and buildings façade easement, this completely restored farmhouse with formal gardens was the scene of Indian trade with early colonial settlers along the Beaver Dam Creek, and later, part of the Gettysburg Campaign.

The farm has an original summer kitchen with original walk-in hearth fireplace, a granary, spring house, carriage house, garden shed, outhouse, stable, and a barn with cannonball hole. The creek is a meandering spring-fed stream named by the Indians of the region during the 1700's. Situated on 10.28 acres just 4.5 miles from Lincoln Square, the Tate Farm was the scene of heavy fighting on July 2nd, 1863 between Brigadier General George Armstrong Custer, Army of the Potomac and General Wade Hampton, Cobbs Legion, Army of Northern Virginia.

Built in the year 1740, with an addition added on in 1820, The Tate Farm has been the scene of one of the most overlooked aspects of the Gettysburg Campaign.

The original two-story house is hewn out of virgin chestnut and oak logs, and the log structure has been completely restored. The house has 3 large bedrooms, 2 full baths with claw-foot tubs (one upstairs and one downstairs), 4 brick fireplaces, one with a bake oven; and 5 inch wide T&G cherry hardwood floors with many raised-panel doorways. A complete laundry room on the first floor, 2 staircases (main is Mahogany) and a small library/office area.

The house has plenty of exposed beams ... dining room beam has a Confederate cannonball (Hotchkiss shell) impact mark. The property is listed on the PA Civil War Trails and The Journey through Hallowed Ground National By-Way.

Restoration included replacement of every window, addition of new Burnham oil heating unit with completely upgraded plumbing, all new wiring with 200 amp panel, hot water baseboard heat, original bead-board doors and hardware, original German clapboard siding, all Williamsburg original colors with some stenciling, chair rail, large crown moldings and wood ceilings. The kitchen boasts of a 9 foot wide colonial fireplace with bake oven, honey spiced pine cabinets, Corian counter, and stainless steel appliances.

This home has the potential for historic walking tours, “farm-to-table” working farm, landscape/nursery business, horse farm, antiques shop, or a historic bed & breakfast!

The Historic Tate Farm ... a one of a kind property ...

One visit will take you back in time!

FOR MORE INFORMATION, OR TO MAKE AN APPOINTMENT:

HistoricTateFarm@aol.com or 717-688-2145

Please include your name and phone number

